



Guangzhou
Medical
Production



impaCT 160

Computed Tomography Scanner for Whole Body

CT Systems

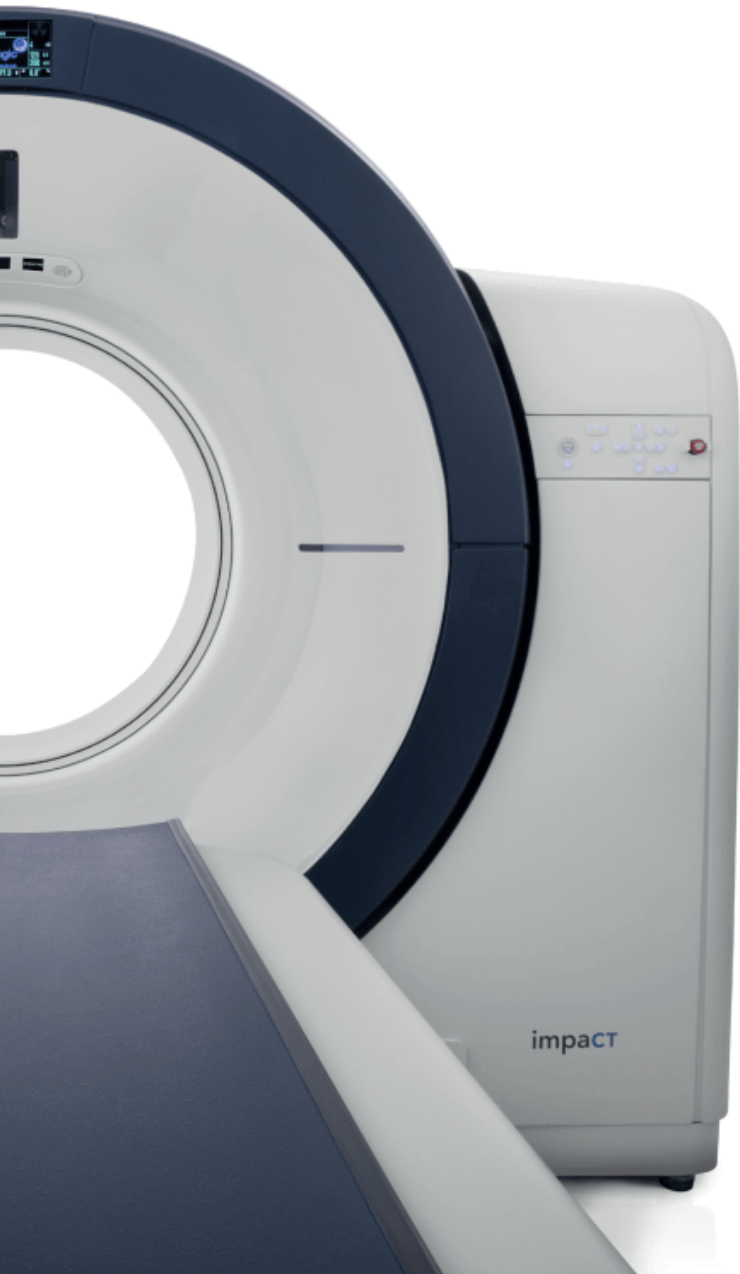
Designed to disrupt traditional expectations in CT, GMP's CT system platforms provide a highly reliable, premium CT experience at a lower total-cost-of-ownership.

Leveraging five decades of experience in CT, our systems are engineered to deliver best-in-class reliability and image quality. At the center of this experience is GMP's heritage and expertise in advanced detector and power transfer technologies – the core of the CT scanner responsible for image quality and clinical capabilities.

Image quality

Our systems utilize a dose-efficient imaging chain and provide comprehensive radiation dose management. Features like LISA™ iterative reconstruction technology, standard on all machines, and 3D mA modulation, deliver high image quality with a low radiation exposure to patient.





- 72 cm gantry aperture
- PowerLink™ non-contact power and data transfer
- 160-slice
- Slice thickness range 0,5 – 10 mm
- 0.35 second rotation speed
- Patient tables with up to 300 kg load capacity
- Up to 100kW effective power
- Intuitive graphic user interface

FEATURES

Reduce Time

Our integration capabilities
accelerate time-to-market

Multi-modality

Ideal solution for hybrid
imaging applications

Customizable

Solutions tailored to your
application

Cost Effective

Designed to optimize
Total Cost of Ownership



Overall dimensions and weight

Unit	Length (mm)	Width (mm)	Height (mm)	Weight (kg)
Gantry	2250	900	1980	1900
Patient table	2600	650	1050	570
Console	810	450	648	55

Requirements for working environment and placement

Temperature

Scanning room: 18 - 24° C

Operator's room: 18 - 26 ° C

Humidity

Scanning room: 30% -70%, without condensation

Operator's room: 30% - 70%, without condensation

Atmospheric pressure:

Scanning room: 70 - 106 kPa

Operator's room: 70 - 106 kPa

Power supply

Power line: 160 kVA

Input voltage: 3 phases 380 VAC + 10%, equipped with a transformer

Power option: 380-480 VAC

Voltage fluctuation: Tolerance $<\pm 10\%$

Frequency: 50 / 60 Hz ± 1 Hz

Requirements for the premises

Minimum scanning room area: 26 m² (size 6.5 x 4.0 m)

Recommended scanning room area: 34 m² (size 6.5 m x 5.2 m)

Minimum ceiling height: 3.0 m